



Ideal for students of The Tailoring Academy

- **Fully self contained**

Private bathroom, bedroom, kitchen and living area

- **Move in Ready**

Cookware, bedding, washer, Smart TV & Wifi

- **All bills included**

Utilities, council tax, Wifi and maintenance

- **Prime location**

10 minute walk to Tailoring Academy and train station

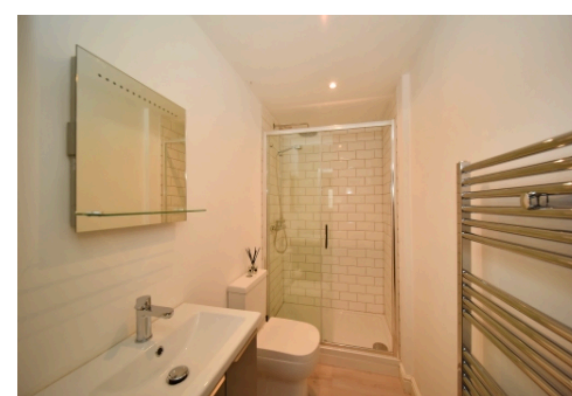
- **Pricing and sizes:**

£1250 - £1500 per month, 29-52 Sqm

- **Availability**

September 2026 - Mid July 2027 (Full-time course)

27th July 2026 - 21st August 2026 (Summer course)



For more information, please contact Andrew:

- enquiries@premierproperty.group
- 07912 882885